



DREHMO

VALVE ACTUATORS

keeping the flow...

DREHMO® Tools

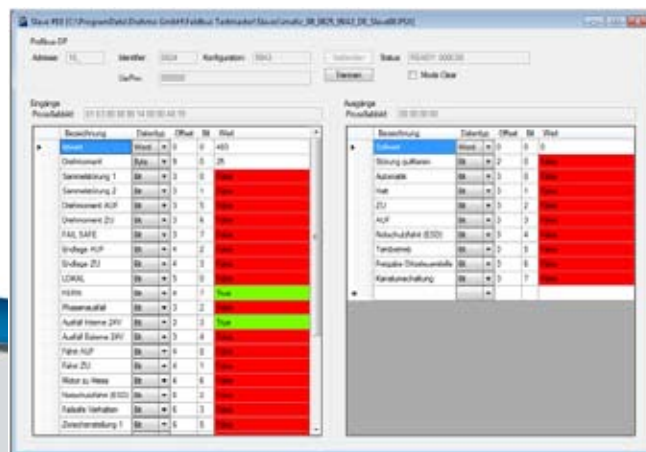


Adapter / Hardware

	Part No.	Name / Description
	188603	IrII Adapter USB/IrII Adapter to communicate with i-matic actuators, which are equipped with an IrII interface; including PC software i-matic Explorer on CD-ROM
	235494	Bluetooth Dongle USB/Bluetooth Adapter to communicate with i-matic actuators, which are equipped with a Bluetooth interface; including PC software i-matic Explorer on CD-ROM
	188599	DREHMO Programming Adapter Kit The adapter kit consists of a USB cable with a DREHMO specific programmed USB serial converter and three different adapter boards SER01, SER02, SER03. (SER04 is available separately and no part of the basic adapter kits)
	280995	Magnetic Pen Magnetic pen to operate the local controls on i-matic devices with appropriate equipment
	188870	Profibus Test Device Easy integration into existing Profibus systems For testing the Profibus communication without or parallel to the control system Connection via USB interface
	281812	Profibus Terminator This unit provides two independent active Profibus terminator protected in IP68. Supply via 24 V DC or optional integrated wide range power supply 90-264 V AC / 120-370 V DC.

Software / Freeware to download from www.drehmo.com

Name	Description
Matic C Operator	Software for commissioning, parameterization and diagnosis of Matic-C actuators
i-matic Explorer	Software for commissioning, parameterization and diagnosis of i-matic actuators
i-matic Explorer PDA Version	Special version of i-matic Explorer to use on PDA's. (compatibel with Windows Mobile 5.0 and 6.0)
Fieldbus Testmaster	Universal test and diagnostic tool for the commissioning of fieldbus devices. It is tailored specifically to the commissioning of DREHMO actuators with Profibus DP or Modbus interface. Through its great flexibility it also offers the ability to communicate with field devices from other manufacturers.



DREHMO DTM Collection	Devices DTM for the integration into an FDT Container.
EDD for i-matic	Device Description for use within the Simatic PDM's for acyclic parameterization and diagnosis of i-matic actuators, which are equipped with a Profibus DPV1 interface.
EDD for Matic C	Device Description for use within the Simatic PDM's for parameterization and diagnosis of acyclic Matic-C actuators, which are equipped with a Profibus DPV1 interface.
OPC Server for i-matic	OPC server to provide the actuator's parameter, which can be read out by adapter solutions, to an OPC client.

Miscellaneous

Part No.	Name / Description
----------	--------------------



Setting device

For easy setup and configuration of actuators on-site DREHMO provides different customized tools.



Test bench

With PSD-series test benches, DREHMO provides a favorable alternative to on-site inspection and measurement of actuators. The time-consuming process, coupled with the redelivery of the actuators to the manufacturer, can herewith be reduced significantly.



188604

Tool set for commissioning

Everything under control with the commissioning tool set of DREHMO. The most important tools are available in a handy rolling bag.

DREHMO GmbH

Zum Eichstruck 10 • D-57482 Wenden
www.drehmo.com • drehmo@drehmo.com
Fon: +49 27 62 98 50-0 • Fax: +49 27 62 98 50-105